



# Bank View

East Hunsbury, Northampton

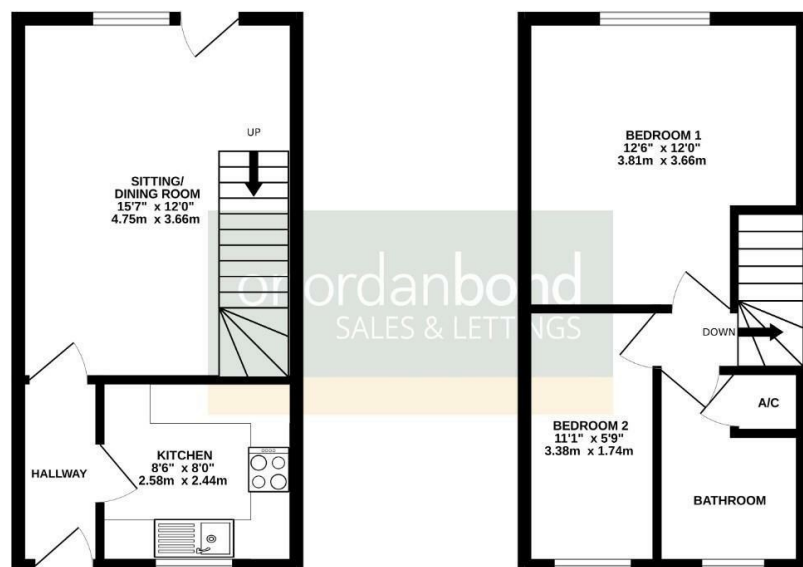
**oriordanbond**  
SALES & LETTINGS





GROUND FLOOR  
283 sq.ft. (26.3 sq.m.) approx.

1ST FLOOR  
283 sq.ft. (26.3 sq.m.) approx.



TOTAL FLOOR AREA : 566 sq.ft. (52.6 sq.m.) approx.

Whilst every attempt has been made to ensure the accuracy of the floorplan contained here, measurements of doors, windows, rooms and any other items are approximate and no responsibility is taken for any error, omission or mis-statement. This plan is for illustrative purposes only and should be used as such by any prospective purchaser. The services, systems and appliances shown have not been tested and no guarantee as to their operability or efficiency can be given.  
Made with Metagage 02/2020

## Bank View

East Hunsbury  
NN4 0RS

PRICE £210,000

Offered to the market with no onward chain is this well presented two bedroom terraced home, nestled at the end of a cul-de-sac, within the popular area of East Hunsbury.

The accommodation comprises entrance hall, a modern re-fitted kitchen with integrated appliances to include an oven and hob/extractor and a separate sitting/dining room with stairs to the first floor and door to the rear garden. To the first floor is access to the loft space, two ample bedrooms and a modern re-fitted bathroom. Outside there is allocated parking to the front and a low maintenance rear garden which is mainly laid with paved areas, a timber deck and timber fencing to enclose. Further benefits include uPVC double glazing and gas radiator heating. (B/566/M)

### Additional information

- Council Tax Band: B
- Energy Efficiency Rating: C

### Viewing

Viewing strictly by appointment – details below

### Disclaimer

O'Riordan Bond Estate Agents Limited has not tested apparatus, equipment, fittings or services and so cannot verify they are in working order. The buyer is advised to obtain verification from their solicitor or surveyor.

O'Riordan Bond Hunsbury Sales  
01604 706007

[hunsbury@oriordanbond.co.uk](mailto:hunsbury@oriordanbond.co.uk)

